



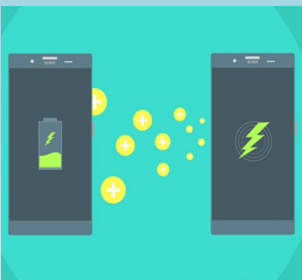
COMPATIBILITY

Wireless charging capabilities with the latest Qi compatible devices including the latest smartphones, headphones, smartwatch and powerbanks. One charging point for multiple devices.



VERSATILITY

Eliminating the need for international adapters also makes the wireless charging unit a perfect option for airports, casinos and hotels as well as being useful around the home and office.

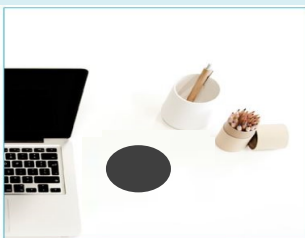
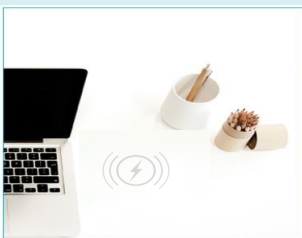


EFFICIENCY

Seamless, fast and effective charging. Charge times vary for different devices and batteries but are comparable to charge times using a hard wired connection.

ORDERING

An integrated wireless charging surface is available when purchasing a laminated top. Charging units can be completely 'hidden' under the surface of the top or can be marked with a discrete sticker. Or for a more permanent visual marker we can supply an elegantly designed soft-touch 'cap'. Talk to us about the options.



Qi Compatible Smartphones

Apple iPhone 8, 8 Plus, X, XS, XR, 11, 11 Pro, 11 Pro Max, SE

Samsung Galaxy S6, S6 Edge, S7, S7 Edge, S8, S8+, S9, S9+, S10e, S10, S10+, S20, Note 5, Note 8, Note 9, Leader 8, W2016

LG G3, G4, G5, G6, G7, V30, V50, V50, V60

Microsoft Lumia 920, 928, 929, 930, 950, 950XL, 1020, 1520

Google Nexus 4, 5, 6, Pixel 3, 3XL, 4XL

Huawei Mate RS, Mate 20 RS, Mate 20 X, Mate 20 Pro, Mate 30, Mate 30 Pro, P40 pro

BlackBerry Priv, Passport, Z30

The list of smartphones isn't exhaustive but most new devices from reputable manufacturers have Qi technology. The most reliable confirmation is to check the manufacturers specifications for Qi compatibility.

BUY WITH CONFIDENCE

Charging units come with a 1 year limited product warranty covering the charging unit parts or if required a full device replacement. Conditions apply. Refer to the Product Information on our website for further details.

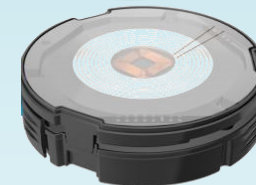


1 DEMAND AVENUE
ARUNDEL, QLD

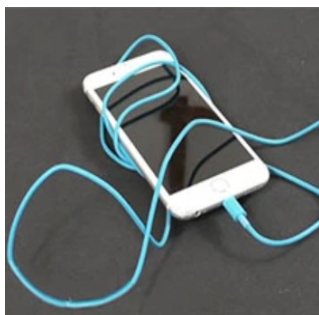
WWW.GCPF.COM.AU
07 5594 9855



Seamlessly Integrated Wireless Charging



**SAFE
EFFICIENT
CONVENIENT**



TRANSFORM YOUR SURFACES INTO A MOBILE DEVICE CHARGING SPOT WITH NO VISUAL IMPACT TO SURFACE AESTHETICS

WIRELESS CHARGING SURFACE

Wireless charging means that you just drop your Qi certified device onto the surface and charging immediately starts without having to plug anything into your phone. So no need for messy cables or multiple different adapters.

Wireless charging works by transferring energy from the charger to your device which is converted into electricity to charge the battery. Advanced technology makes this a convenient, safe and efficient charging solution.

Neat and discrete undermount installation means that the unit can be completely hidden or if you choose then the location can be indicated with a marker.

Create intuitive and convenient wireless charging spots in your home, office or commercial public space.

Convenience

Suitable for multiple surfaces like your kitchen benchtop, desk, vanity or on just about any flat surface location, if installed at a safe distance from water, metal objects and food preparation areas. The unit comes pre-installed into your custom built surface and is supplied with a 1.8 meter lead and power pack that simply needs plugging into a nearby power supply.

Durable

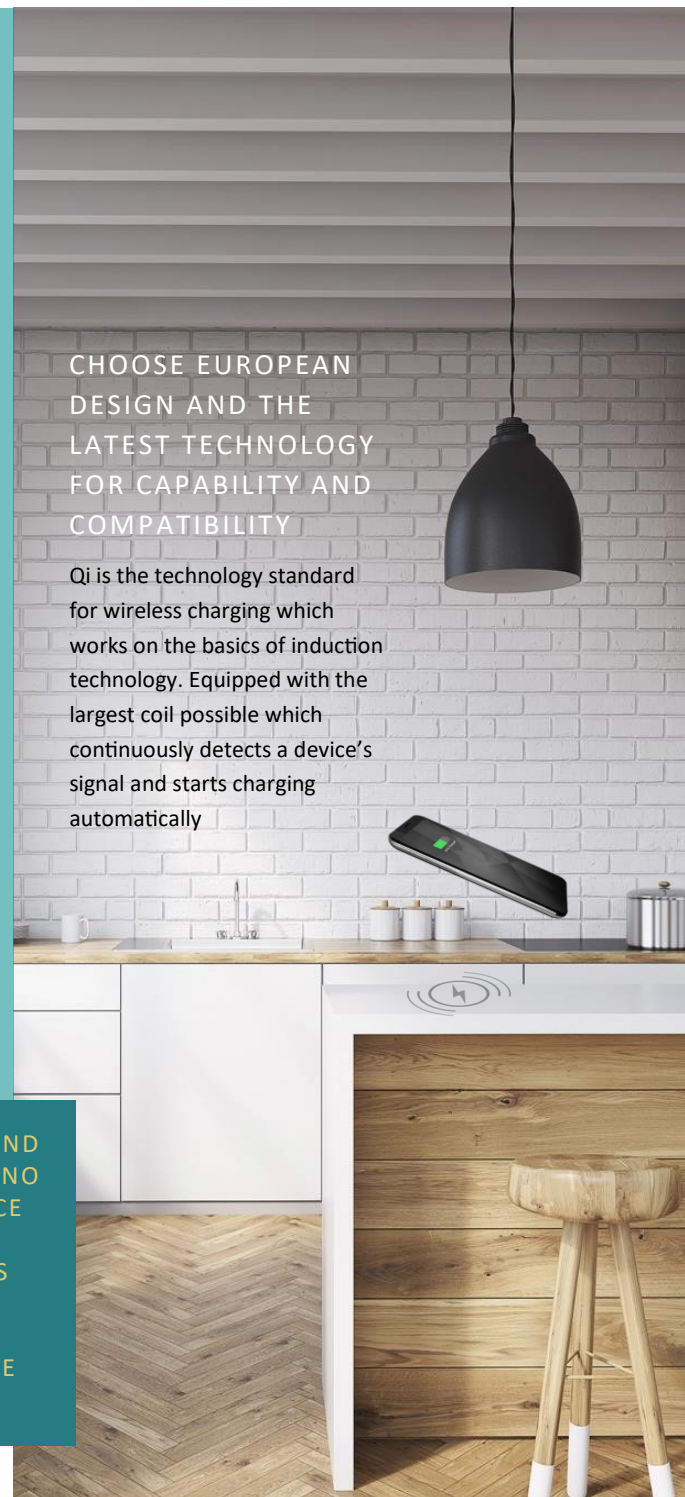
Designed to be durable and manufactured from sustainable, top quality materials. Laboratory tested to determine quality and charging speed. Installed to ensure efficiency whilst maintaining adequate surface strength.

Superior Specifications

Be assured by quality. Designed in Europe, the charging units have been independently tested to help ensure safety and energy efficiency. Only products that meet rigorous standards can be Qi Certified. Qi Certification assures wireless charging compatible with over 500 Qi Certified devices including Apple iPhone, Samsung, LG, Google and HTC devices.

CHOOSE EUROPEAN DESIGN AND THE LATEST TECHNOLOGY FOR CAPABILITY AND COMPATIBILITY

Qi is the technology standard for wireless charging which works on the basics of induction technology. Equipped with the largest coil possible which continuously detects a device's signal and starts charging automatically



BUILT-IN SAFETY

The device has been designed with safety in mind and has built-in Foreign Object Detection (FOD). FOD technology is a safety mechanism that automatically stops charging if there is interference caused by a foreign object such as metal (e.g. keys, coins, bankcards). FOD also prevents the charger from emitting unnecessary power and heat that could damage your smartphone or charger. The Qi Certified unit is also CE/FCC certified proving compliance with health, safety and environmental protection legislation.



UNDERMOUNTED AND INTEGRATED WITH NO IMPACT ON SURFACE AESTHETICS TO CREATE A WIRELESS CHARGING SPOT IN YOUR HOME, COMMERCIAL SPACE OR OFFICE